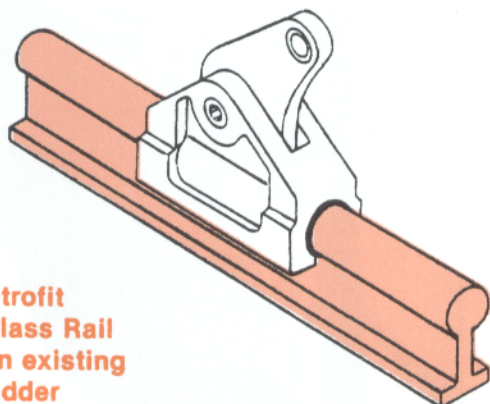
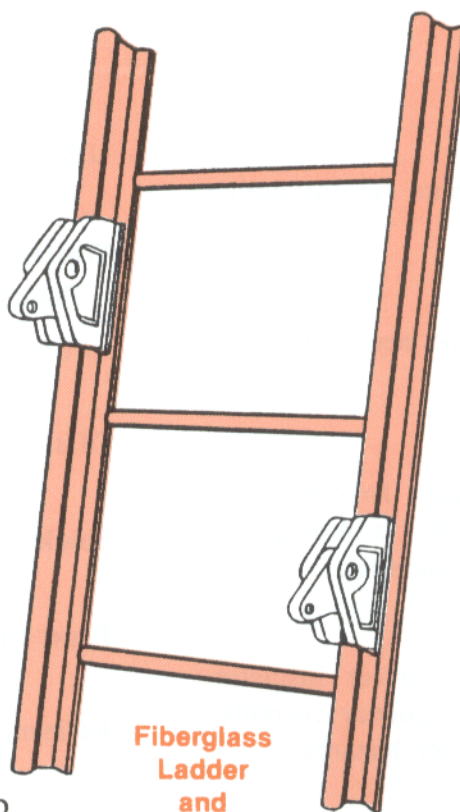


Climber's Buddy

fiberglass ladders
and
climber's
safety systems



Retrofit
Fiberglass Rail
to go on existing
Ladder



Fiberglass
Ladder
and
Rail

U.S.PAT.NO.
4269284

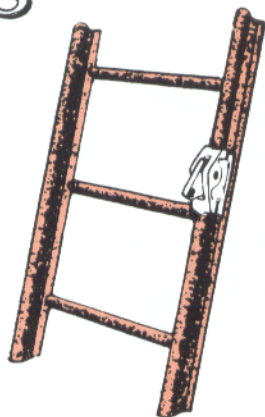
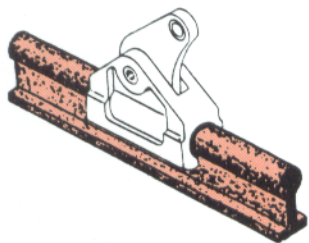
fiberglass rigid rail • fiberglass ladders
...with incorporated cam action safety sleeves

Phone: (800) 223-7517
(260) 495-4065
Fax: (800) 822-3414
(260) 495-4205



P.O. Box 750
501 E. Swager Drive
Fremont, IN 46737
E-mail: sales@surloc.com
Website: www.surloc.com

Climber's



Buddy

Mr. Manufacturer,

Climber's Buddy Corp. is an organization that has long realized the importance of man's safety systems. Architects and engineers faced with corrosion and maintenance problems have an economical answer with these fiberglass ladders with the incorporated safety rail, which offers many superior advantages. The fiberglass rail is an excellent retrofit to existing ladders in high corrosion areas.

FIXED FIBERGLASS LADDERS WITH INCORPORATED SAFETY RAIL

ADVANTAGES

ECONOMICAL

Initial cost plus maintenance free operation.

DURABLE

Non-corrosive, no need for future replacement.

EYE APPEALING

Standard color International Orange. The color is impregnated throughout the material.

NON-CONDUCTIVE

Fiberglass is a perfect insulator even to radio frequency currents. Protects against RF hazards.

SIMPLICITY

Can be installed by two men with standard tools.

MAINTENANCE

Maintenance free-no painting or re-painting ever.

- U.S. Navy Ships
- Wastewater Treatment Plants
- Lift Stations
- Offshore Oil Rigs
- Smoke Stacks
- Paper Mills
- Refinery
- Chemical Plants
- Corrosion Area



**MEETS ALL
OSHA 1910.27
STANDARDS**

SATISFACTION: **CLIMBER'S BUDDY LADDERS** can be offered in various sizes. Standard stock comes in 12 ft. lengths. The ladders with their incorporated safety rails were developed to be used in ever increasing corrosive atmosphere. At the same time at no additional cost, both ladder runners are used as a carrier for a safety sleeve. These ladders are to be used in lieu of steel ladders in new construction. Ladders are available complete with stainless steel mounting hardware.